

Fig. 1 Mass spectra of compound a

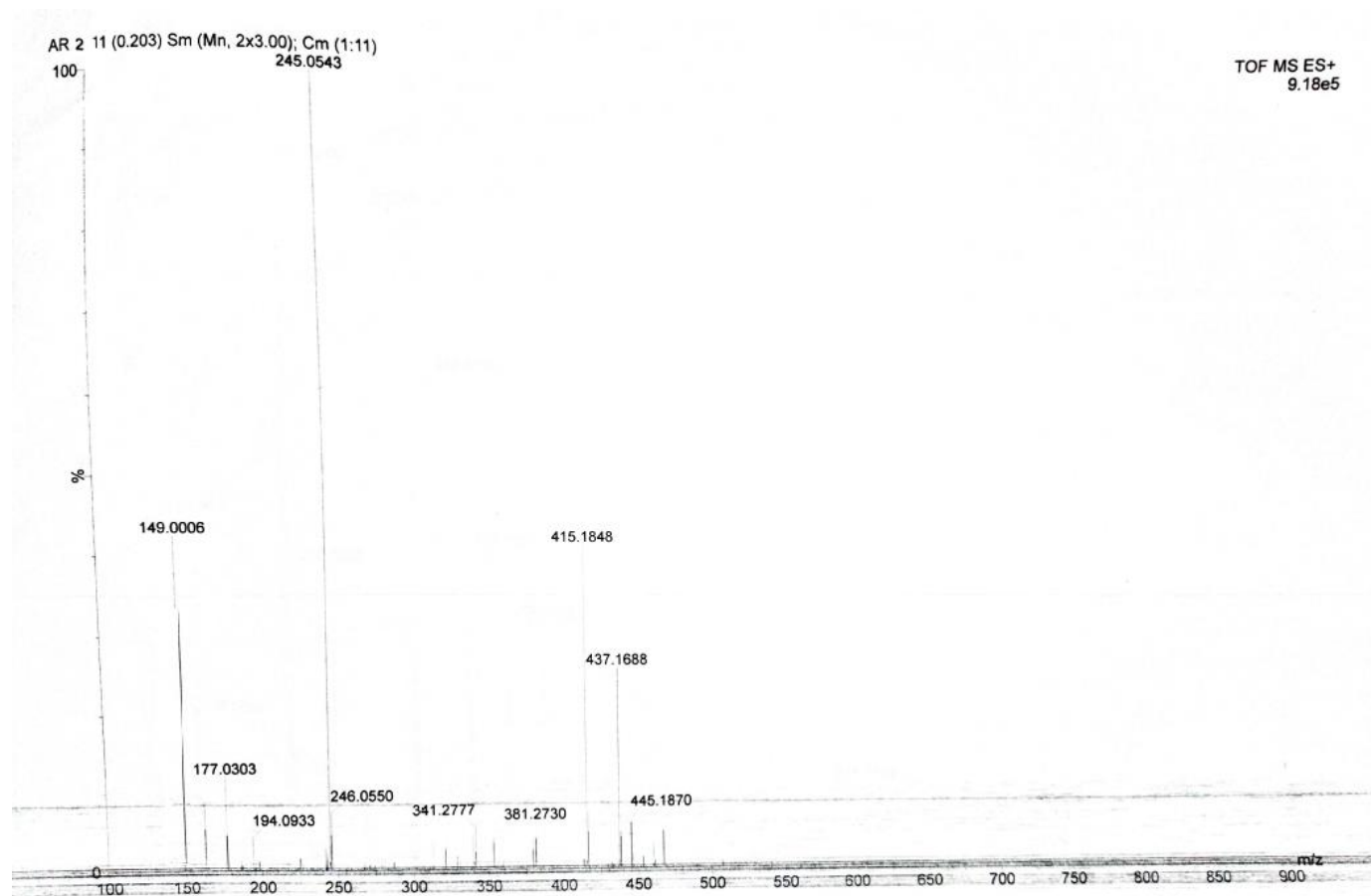


Fig.2 Mass spectra of compound b

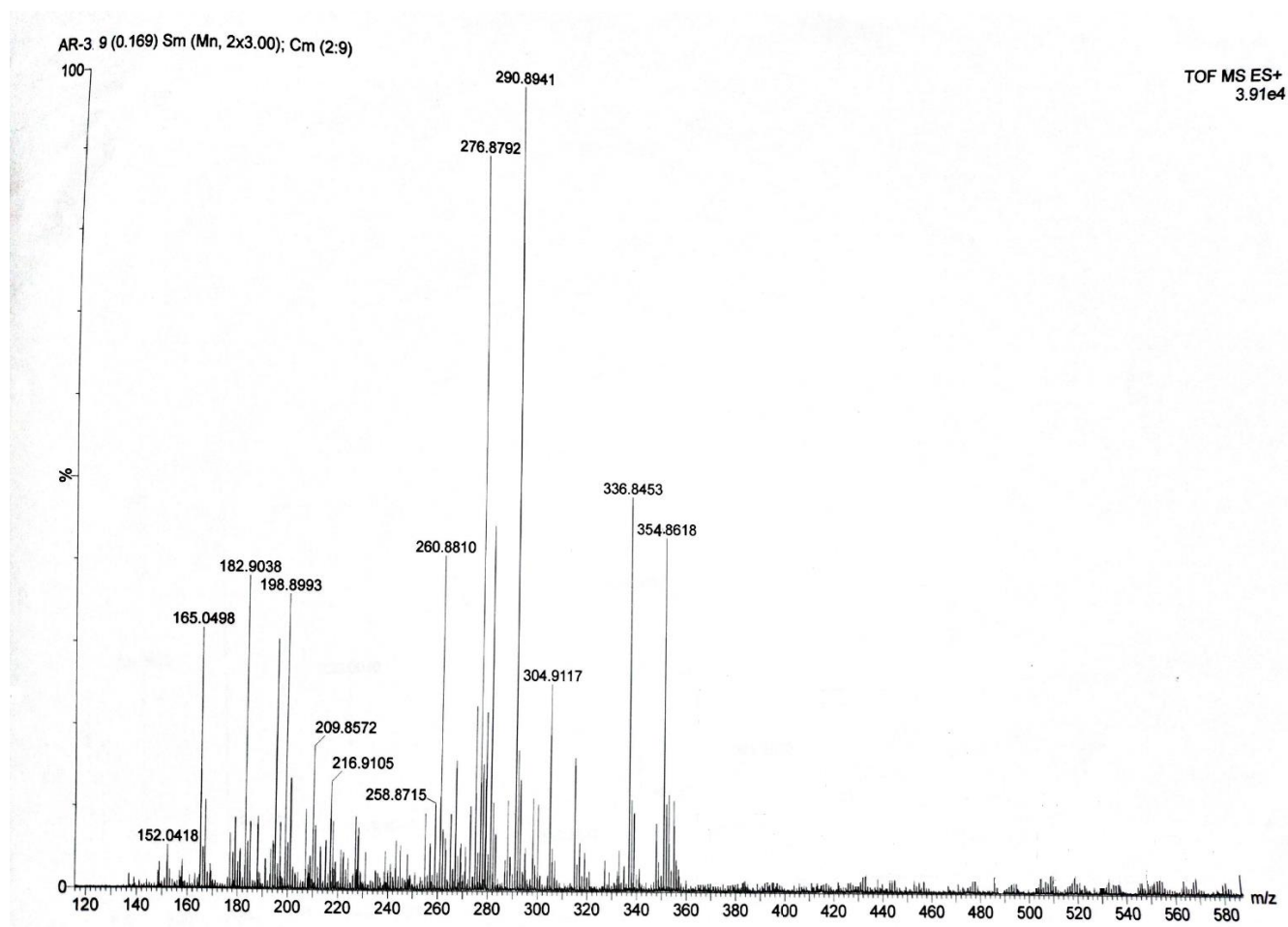


Fig.3 Mass spectra of compound c

AR-4 (0.051) Sm (Mn, 2x3.00); Cm (2:7)
197.0416

TOF MS ES+
8.81e5

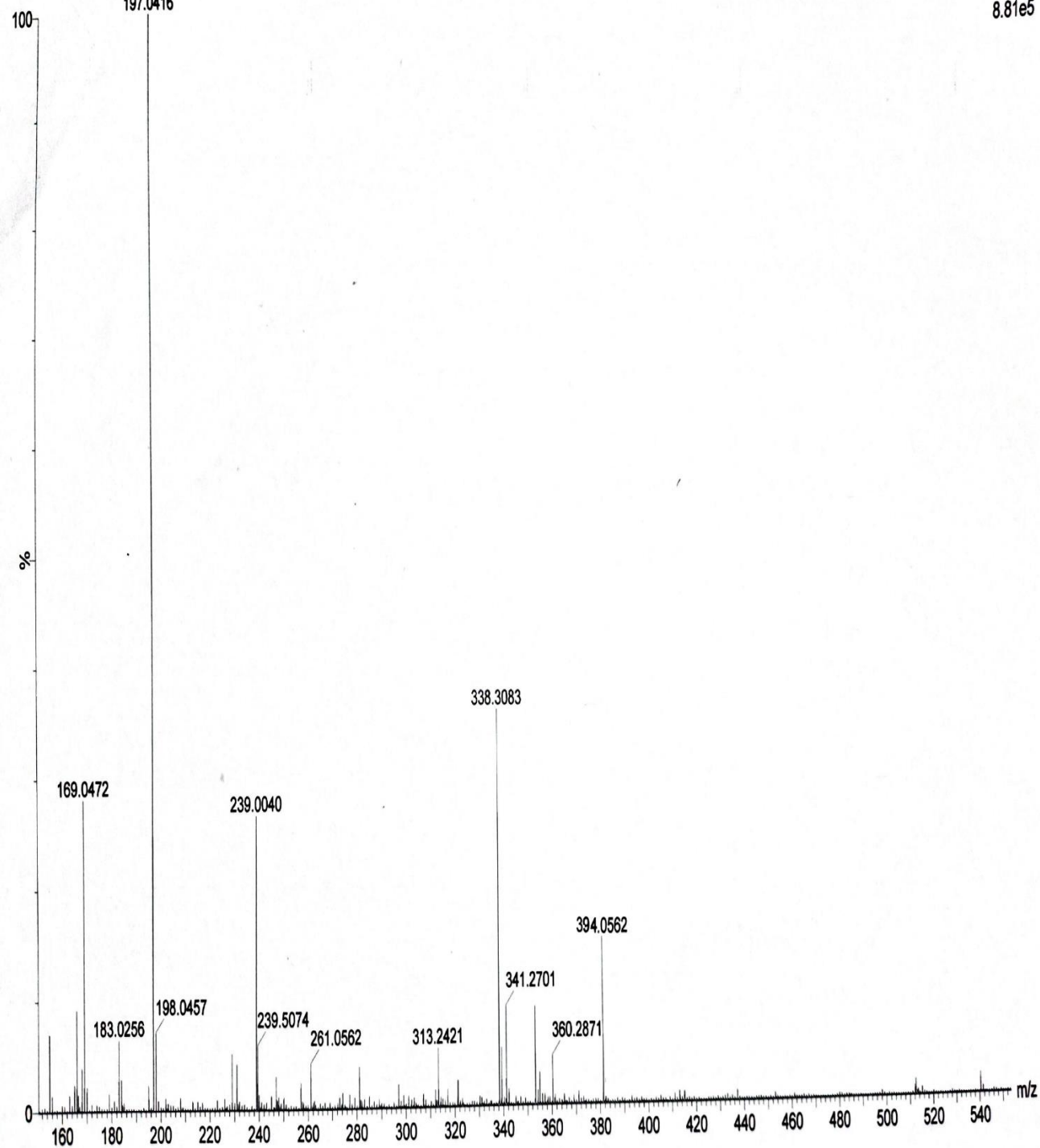


Fig.4 Mass spectra of compound d

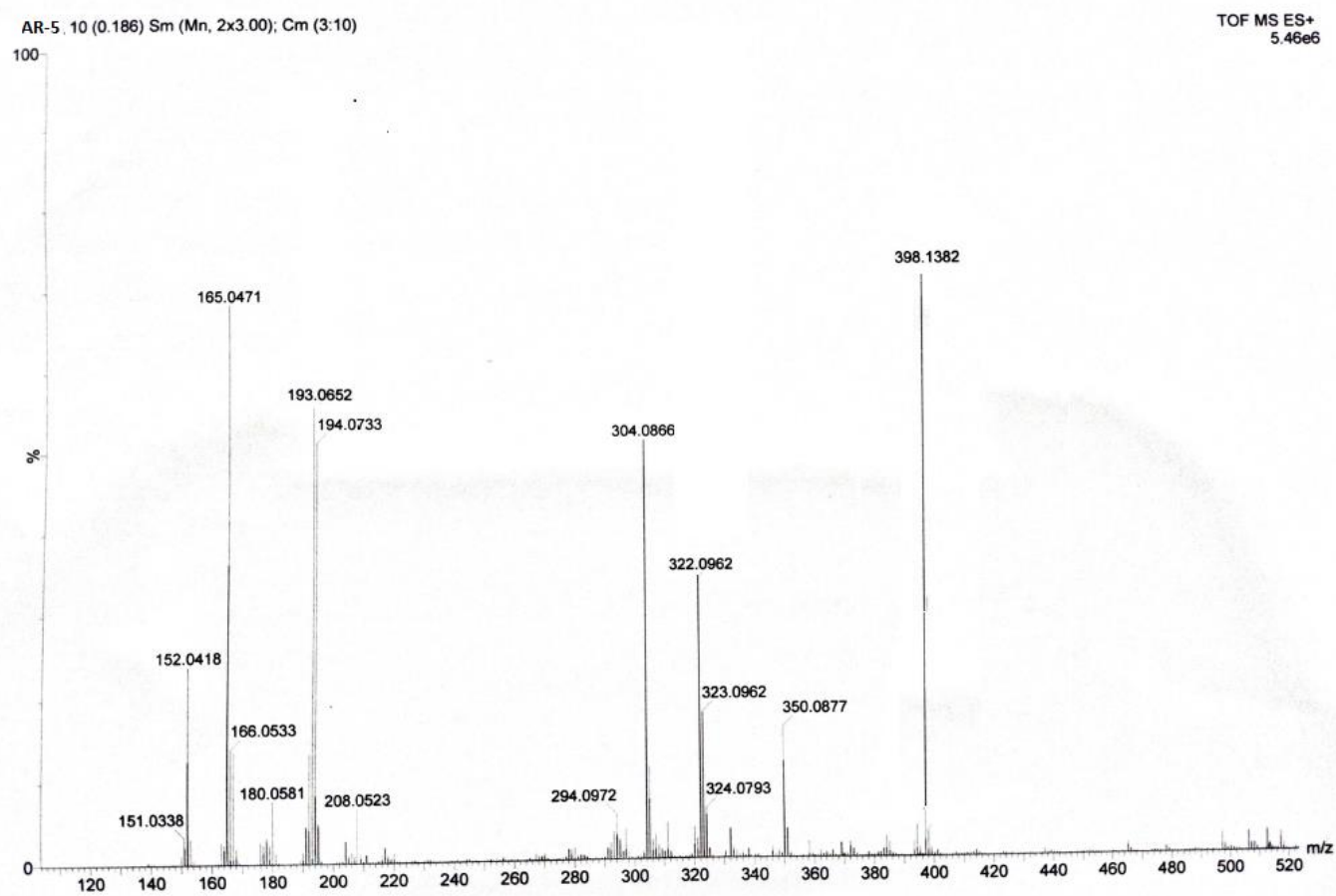


Fig.5 Mass spectra of compound e